

BRAVADO

2-YEAR-OLD HEIFER

Like the Brahmousin, this breed combines the French Limousin with the humped Brahman. Breeding started in 1970 at the Rottmann Ranch, Oklahoma, with imports of Polled Limousin from Canada. In 1986, a polled Limousin cow was mated with a Red Brahman bull, and their calf, Diablo, became the father of the BRAVADO breed. All full-blood Bravados trace back to the ranch's original Polled Limousin stock.

Features

Purebred Bravados are solid red or black (no white allowed), with dark skin pigmentation, and above all are polled. The color range includes for preference "Bravado" (red with dark nose, eyes, and hooves) or solid black, also mahogany or caramel. The horizontal ears are a selected feature of the breed and are between the large droop of the Brahman and the usual European size and carriage.

Use

Like other Brahman crosses, the Bravado is a beef breed that does particularly well in hotter climates. Bravado cows calve easily and milk well in suckler herds and are said to be "fescue friendly."

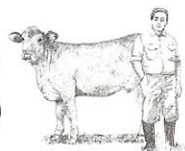
Related Breeds

With their similar origins from a combination of Brahman and Limousin, Bravado and Brahmousin cows differ mainly in the polled factor, uniformity, and color standards bred into the Bravado but not into the Brahmousin. The Bravado breeds true; the Brahmousin is less standardized.

Size

Bull weight 1,800–2,100 lb. (815–950 kg)

Cow weight 1,100–1,200 lb. (500–545 kg)



Origin and Distribution

The breed was developed in Miami, Oklahoma, and has spread to other parts of the USA.

Oklahoma, USA





BREED ASSOCIATIONS

A listing of American purebred beef associations and how to contact them can be found at www.cattletoday.com/associations.shtml. The National Association of Animal Breeders provides a list of dairy cattle breed associations on their Web site www.naab-css.org/guidelines/dairybrd.html. Below are some specific breed associations and societies based in the USA and the UK.

SPECIFIC BREED WEB SITES:

Aberdeen-Angus: www.aberdeen-angus.co.uk

Ankole-Watusi: www.awir.org and www.watusicattle.com

Ayrshire: www.ayrshirescs.org

Belgian Blue: www.belgianblue.org (USA) or www.belgianblue.co.uk (UK)

Belted Galloway: www.beltie.org (USA) or www.beltedgalloways.co.uk (UK)

Brahman: www.brahman.org

Brahmousin: www.americanbrahousincouncil.org

Braunvieh: www.braunvieh.org

Bravado: www.bravadocattle.com

British Blonde: www.britishblondesociety.co.uk

British Blue: www.britishbluecattle.org

British Simmental: www.britishsimmental.co.uk

British White: www.britishwhitecattle.co.uk

Brown Swiss: www.brownswissusa.com (USA) or www.brownswiss.org (UK)

Charolais: www.charolaisusa.com (USA) or www.charolais.co.uk (UK)

Devon: www.redrubymdevon.co.uk

Dexter: www.purebreddextercattle.org (USA) or www.dextercattle.co.uk (UK)

Galloway: www.galloway-world.org (for worldwide listings)

Gelbvieh: www.gelbviehworld.com

Gloucester: www.gloucestercattle.org.uk

Guernsey: www.guernseycattle.com (England) or www.worldguernseys.org

Hereford: www.herefordcattle.org or www.thcbc.co.uk (traditional type)

Highland: www.highlandcattlesociety.com

Holstein: www.holsteinusa.com (USA) or www.holstein-uk.org (UK)

Jersey: www.usjersey.com (USA) or www.ukjerseys.com (UK)

Limousin: www.limousin.co.uk

Lincoln Red: www.lincolnredcattlesociety.co.uk

Longhorn: www.longhorncattlesociety.com

MaineTainer: www.maine-anjou.org (USA)

Red Angus: www.redangus.org (USA)

Red Poll: www.redpoll.org

Salers: www.salersusa.org (USA) or www.salers-cattle-society.co.uk (UK)

Santa Gertrudis: www.santagertrudis.org

Shorthorn: www.shorthorn.org (USA) or www.shorthorn.co.uk (UK)

Simmental: www.simmental.org

South Devon: www.shouthdevon.com (USA) or www.sdhbs.org.uk (UK)

Sussex: www.sussexcattlesociety.org.uk

Texas Longhorn: www.tlbaa.org

Welsh Black: www.welshblackcattlesociety.com

ACKNOWLEDGMENTS

We would like to thank the organizations below for their help and cooperation in arranging the photo shoots at the agricultural shows.

Special thanks to: Susan Fleet, Steve Cook, Jo Illsley, Brandi Herndon, Kara Eschbah, and Josh New.

South of England Show
www.seas.org.uk

The Royal Show
www.royalshow.org.uk

Tulsa State Fair
www.exposquare.com

We would also like to thank all the cow owners and breeders for their time and assistance at the photo shoots.:

Ankole Watusi Vernon P. Base
Braunvieh Albert & Joan Thorne

Highland Mrs. S. Tedbury

Gloucester William & Janet Murphy

Devon Jeff & Pat Thomas

South Devon Daniel & Laura Cook

Sussex Jo Masters

Salers Carolyn Fox

Limousin Buriton Estate Ltd.,

Handler Mary Reynolds

Charolais Mortimers Farm

Simmental Roger Birch

Texas Longhorn John & Diann Chase

Jersey Mrs. Pam Ainslie

Guernsey Tyler Chupp, Chupps Guernsey Farm

Aberdeen-Angus Angus Stovold

Ayrshire Oathall Community College

Belted Galloway Whitepool Belted Galloways

Hereford Carolyn Fletcher

Longhorn P. V. Robinson

Dairy Shorthorn Randy Wright

Beef Shorthorn D. Mellish

Lincoln Red H. M. & J. M. Needler

British White New Biddenden Green Farm

Red Poll Terry & Helen Mancey

Dexter Mrs. Henderson

Welsh Black Charlotte Reynolds

Brahman Rich Cattle Co.

Santa Gertrudis Shane Broussard

Holstein M-6 Dairy Farm, LLC

Brown Swiss The Dean Family

Gelbvieh Shannon Worrell

Belgian Blue Ronnie & Kathy Price

Red Angus Tony & Carla Clark

Brahmousin Hilltop Farms

Bravado Ron Rottmann

British Blonde Ian & Sue Archer

British Blue James Barber

MaineTainer Diamonds In The Rough Cattle Co. (Blaikley Family)

Picture credits

Corbis/Sandro Vannini: 8

Alamy/Arco Images GmbH: 9

Corbis/Brian A. Vikander: 11

Corbis/Yann Arthus-Bertrand: 12

Corbis/Jamil Bittar: 13

Museum of English Rural Life, University of Reading: 14.

